



Chatfield Storage Reallocation Project

CRMC ANNUAL REPORT
FOR CALENDAR
YEAR 2017



March 2018 Final

PREPARED BY:
Chatfield Reservoir
Mitigation Company, Inc.

Table of Contents

Chapter 1 Introduction (1-1)

- Overview
- Annual Report Organization
- Summary of Key 2015-16 Accomplishments
- Definition of Terms
- Acronyms

Chapter 2 The CRMC (2-1)

- Company Organization Structure
- Financial Organization
- Project Coordination Team
- Technical and Operations Advisory Committees
- Chatfield Marina Coordination Committee

Chapter 3 Design and Opinion of Probable Cost (3-1)

- Design
- Schedule
- Opinion of Probable Cost

Chapter 4 Progress Summary (4-1)

Reference Documents (R-1)

List of Figures

Figure 1 CRMC Organization Structure

List of Tables

Table 1 Summary of Total Project Costs

Table 2 Summary Status of Federal and State Requirements for CSR

Chapter 1

Introduction

Overview

Presented herein is the Chatfield Reservoir Mitigation Company, Inc's (CRMC) second annual report on progress towards implementation of the Federal and State requirements for environmental and recreational mitigation activities for the Chatfield Storage Reallocation Project (CSRP or Project).

This report, which is prepared for the U.S. Army Corps of Engineers (Corps), summarizes CRMC'S activities from January 1, 2017 through December 31, 2017 pursuant to the 2014 Water Storage Agreement (WSA), the combined Feasibility Report and Environmental Impact Statement (FR/EIS, also called the Reallocation Report), and the Colorado Parks and Wildlife (CPW) Fish, Wildlife, and Recreation Mitigation Plan.

History

In 1994, the Colorado Water Conservation Board (CWCB), on behalf of Colorado DNR and the project participants, initiated study for the CSRP based on previous Congressional authorization for the Corps to reallocate storage space within Chatfield Reservoir for water supply. In 2014, the Corps issued its Record of Decision approving the CSRP. Further, the State Fish, Wildlife and Recreation Mitigation Plan (122.2 Plan) was subsequently approved by the CPW Commission, satisfying all federal and state project review and approval requirements.

The Project consists of reallocating storage space in Chatfield Reservoir by the Corps authorizing the use of 20,600 acre-feet of storage space by the project participants for municipal and other purposes. The Reallocation Report also included extensive hydrologic studies by the Corps demonstrating that flood protection provided by Chatfield Reservoir would not be compromised by the CSRP.

This Annual Progress Report is a requirement of the Appendix K – Compensatory Mitigation Plan of the Reallocation Report. The Compensatory Mitigation Plan (See CMP, p109) and the Adaptive Management Plan also require submittal by the CRMC of the following reports at various times:

- As-Built Reports
- Monitoring Reports
- Adaptive Management Analysis
- Design Reports
- Water Quality Monitoring Report (AMP, p21)
- Water Quality Modeling Report (AMP, p23)

The Annual Report provides updates on the status of the reports identified above, but actual submission of the reports will be handled separately when submission is required.

Annual Report Organization

This Annual Report is organized into four parts: a discussion of the CRMC’s accomplishments, organization, and project design (Chapters 1, 2 and 3), and a list of Federal and Colorado Requirements addressed and summarized in Table 2 that identifies all material requirements and their status to facilitate the Corps progress review (Chapter 4).

Chapters 1, 2 and 3

CRMC

1. Introduction
2. CRMC: Describes CRMC organization including current Company Members, Board of Directors, General Manager, Construction Manager, Project Coordinator, Program Manager (PgM), Company Counsel, Accountant, Auditor, Project Coordination Team, Technical Advisory Committee, Chatfield Marina Coordination Committee. The Reservoir Model Coordination Committee (RMCC) was also established and has been operating since December 2016.
3. Design, Construction, and Opinion of Probable Cost (OPC) Update: Describes the design and implementation procedures and processes to complete the Reallocation Project.

Chapter 4

Federal Requirements

The Water Storage Agreement (WSA) was executed by the Department of the Army and the Colorado Department of Natural Resources (CDNR) on October 9, 2014. The contract provisions discuss the roles and responsibilities of the parties, as well as conditions for reallocation of water storage space, implementation of recreation modifications, and completion of compensatory mitigation features for the CSRP. The WSA grants the right to utilize water supply storage to the CDNR and its designees. Sub-agreements, referred to as Water Provider Agreements, were executed between CDNR and each of the participating water providers in October 2015. The sub-agreements extend the right to store water in the reallocated spaced for each of the water providers (e.g., CRMC Members) based on their pro-rata share in the Project.

Components of the Reallocation Report (FR/EIS) that discuss federal mitigation requirements:

- Compensatory Mitigation Plan: This is Appendix K of the Reallocation Report which describes the required mitigation activities.
- Recreation Facilities Modification Plan: This is Appendix M of the Reallocation Report which describes the impacts of the Reallocation Project on recreation facilities (except for the Chatfield Marina) and modifications to the facilities necessary to mitigate for the impacts.

- Chatfield Marina Reallocation Impact Assessment Report: This is Appendix N of the Reallocation Report that assesses the potential impacts of the Reallocation Project on the Marina and modifications to the facilities to mitigate for the impacts.
- Tree Management Plan: This is Appendix Z of the Reallocation Report that provides an evaluation of the trees that would need to be moved and identifies an adaptive management approach through monitoring of tree stress and mortality. The AMP also “*consolidates and adds information previously provided in the draft FR\EIS*”, which includes the Tree Management Plan.
- Adaptive Management Plan: This is Appendix GG of the Reallocation Report that provides a framework for how uncertainties regarding impacts and/or mitigation will be addressed over time for a variety of resources that may be affected by implementation of the Project.
- U.S. Fish and Wildlife Service Biological Opinion: These are Appendices II and KK of the Reallocation Report which identifies the impacts to the Preble’s Meadow Jumping Mouse (PMJM) by the CSRP and requirements for monitoring and mitigation of the impacts. (See summary of Key Accomplishments).

Colorado Requirements:

Chapter 6 of the Reallocation Report (Description of Selected Plan, Section 6.3) refers to additional requirements of Colorado State Parks and Colorado Division of Wildlife (now Colorado Parks and Wildlife, hereafter CPW) and states:

“These actions are beyond the Selected Plan. These additional measures are described for information only. They are not part of the federal reallocation project and are not included in project costs or evaluations of the FR/EIS.”

- Fish, Wildlife and Recreation Mitigation Plan: This report, which is a requirement of Colorado Revised Statutes 37-60-122.2, also identifies actions that CRMC will implement to mitigate unavoidable adverse impacts the Project may have on fish, wildlife and recreation.
- Water Providers Agreements: These agreements mentioned above between CDNR and each of the Water Providers, dated October 15, 2015, grant each Water Provider the right to use storage space in Chatfield Reservoir in consideration of CRMC performing the obligations specified in the agreements, and require the Water Providers to be CRMC members and to fund CRMC’s activities.

Summary of Key Accomplishments in 2017

- Implemented the off-site Sugar Creek enhancement work;
- Obtained review and approval by the TAC, CRMC, PCT, and USACE for design of the Plum Creek on-site environmental mitigation work;
- Received formal approval by USACE for the entire recreational modification (RM) package except for the Gravel Pond area and the water-side marina work;
- Conducted a successful CRMC/USACE coordination meeting in Omaha, NE in November 2017;
- Began construction on the Plum Creek environmental mitigation (EM) work;
- Began construction on the North Boat Ramp (RM) modification work;
- Began excavation of borrow area #3;
- Began construction on the balloon launch area;
- Began construction on the Deer Creek roadway bridge crossing;
- Began construction on the swim beach area;
- Completed demolition of the existing perimeter road from the west entrance of Chatfield State Park to the South Platte River crossing;
- Identified a new approach to obtaining off-site EFUs through a “standard estate” approach (fee title ownership or fee title donation) rather than pursue changes to the USACE “nonstandard estate” for conservation overlays on private lands.
- Embarked on efforts to create agreements and arrangements for off-site mitigation at the Schmidt Construction Property, Sandstone Ranch Property, and Denver Botanic Gardens at Chatfield Property;
- Contracted with Smith Group JJR for marina architectural services and contracted with Bellingham Marine (BMI) for marina design-build services;
- Moved the CRMC office from 9308 S. Wadsworth Blvd (volunteer house) to 11500 N. Roxborough Park Road (construction trailer);
- Conducted the second Annual Meeting of the Members on October 11, 2017 at which all five CRMC Board Members were re-elected and the 2018 Operations Budget was approved;
- Shifted focus from a PgM-based management scheme to an employee-based management scheme for CRMC, which involved the hiring of two new employees and the re-structuring of responsibilities for the original employee; and
- Conducted numerous TAC meetings to review, discuss, analyze, modify, and approve key components of environmental design work for the Project.

Definition of Terms

The following definitions are taken from the WSA Article I –Definitions and are used in this Annual Report.

1. The term "Chatfield Storage Reallocation Project" shall mean the reallocation of storage space in the Chatfield Project for joint flood control-conservation purposes, including storage for municipal and industrial water supply, agriculture, environmental restoration, and recreation and fishery habitat protection and enhancement, and the performance of recreation modifications and compensatory mitigation features as generally described in the Reallocation Report.
2. The term "Reallocation Report" shall mean collectively: the Chatfield Reservoir Storage Reallocation Final Integrated Feasibility Report and Environmental Impact Statement (also referred to herein as the FR/EIS), dated July 2013, including Appendices A through HH, and Addendum No. 1, dated March 2014, including Appendices II through LL, approved by the Assistant Secretary of the Army (Civil (Works) on May 29, 2014; and Addendum No. 2, dated September 2014, approved by the Northwestern Division Regional Integration Team Leader, U.S. Army Corps of Engineers, on September 26, 2014.

The following definitions apply to this Annual Report:

- The term "Water Provider" and "Chatfield Water Provider" shall mean a participating member of the CRMC;
- The term "Corps" shall mean the U.S. Army Corps of Engineers, or USACE;
- The term "Members" shall mean the CRMC Members;
- The term "Unit" shall mean the amount of a Member's assessments and the number of votes a Member is entitled to cast based upon the volume in acre feet of a Member's storage space in CSR. One Unit is equal to one acre-foot of storage space in Chatfield.

Acronyms

AMP	Adaptive Management Plan, Appendix GG of the Reallocation Report
ATMP	Adaptive Tree Management Plan
BMI	Bellingham Marine, Inc.
CDNR	Colorado Department of Natural Resources
CDPHE	Colorado Department of Public Health and Environment
CenterCWCD	Center of Colorado Water Conservancy District
CentralCWCD	Central Colorado Water Conservancy District
CMCC	Chatfield Marina Coordination Committee
CMP	Compensatory Mitigation Plan, Appendix K of the Reallocation Report
CPMD	Castle Pines Metro District
CPNMD	Castle Pines North Metro District
CPW	Colorado Parks and Wildlife
CRMC	Chatfield Reservoir Mitigation Company, Inc.
CSRP	Chatfield Storage Reallocation Project
CWCB	Colorado Water Conservation Board
CWP	Chatfield Water Providers, now formally the Chatfield Reservoir Mitigation Co.
CWSD	Centennial Water and Sanitation District
EFU	Environmental Functional Equivalent
EM	Environmental Mitigation
FWRMP	Fish Wildlife and Recreation Mitigation Plan, C.R.S. 37-60-122.2
LRE	Leonard Rice Engineers, Inc.
MSA	Master Services Agreement
OPC	Opinion of Probable Cost
PCT	Project Coordination Team
PgM	Program Manager team of CDM Smith Inc. and Leonard Rice Engineers, Inc.
PMJM	Preble's Meadow Jumping Mouse
RFMP	Recreation Facilities Modification Plan, Reallocation Report Appendix M
RM	Recreation Modification
RRR&R	Repair, Rehabilitation, Reconstruction and Replacement,
TAC	Technical Advisory Committee
WSA	Water Storage Agreement between the Department of the Army and the Colorado Department of Natural Resources dated October 9, 2014.

Chapter 2

The CRMC

Formation of the CRMC was a requirement of the CMP (see Reallocation Report, Appendix K Section 7.3, p108).

Each of the 12¹ Chatfield Water Providers will be required to be a member of the Chatfield Reservoir Mitigation Company, which will remain incorporated until all compensatory mitigation obligations have been successfully met and all monitoring and financial obligations are completed.

The CRMC was incorporated² on October 8, 2015. The sole purpose of the CRMC is to conduct such business as may be necessary to satisfy the mitigation obligations of the Members as required for implementation of the CSR. Bylaws³ of the CRMC were adopted at a regular scheduled meeting held on October 12, 2015 and were amended on October 17, 2016.

Currently, the CRMC consists of eight Members including: the Centennial Water & Sanitation District; Colorado Water Conservation Board; Central Colorado Water Conservancy District; Castle Pines North Metro District; Colorado Parks and Wildlife; Town of Castle Rock; the Center of Colorado Water Conservancy District; and Castle Pines Metro District. The number of Members and their proportion of units owned will likely change from time to time.

Company Organization Structure

The CRMC consists of eight (8) CRMC Members with a five (5) Member Board of Directors, which is supported by a General Manager, General Counsel, Construction Manager, Project Coordinator, Accountant, Auditor, Program Manager (PgM), CRMC technical representative, and a public relations team. The Project Coordination Team (PCT) provides high-level guidance and design package approvals with respect to CSR implementation activities.

Board of Directors and CRMC Members. The five Directors for the CRMC Board are elected by the Members at the CRMC Annual Meeting. The three remaining entities are highly active and well represented. The current Board, as of the date of this report, consists of:

- Randy Ray, President (CCWCD)
- Scott Roush, Vice President (CPW)
- Jim Nikkel, Secretary (CPNMD)
- John Kilrow, Treasurer (CWSD)
- Lauren Ris, Board Member (DNR/CWCB)

¹ Since publication of the Reallocation Report, there are 8 Members of the CRMC.

² October 8, 2015. *Articles of Incorporation of Chatfield Reservoir Mitigation Company, Inc. A Colorado Non-Profit Corporation.*

³ October 17, 2016. *Bylaws of Chatfield Reservoir Mitigation Company, Inc.*

CRMC Organizational Chart – 2018

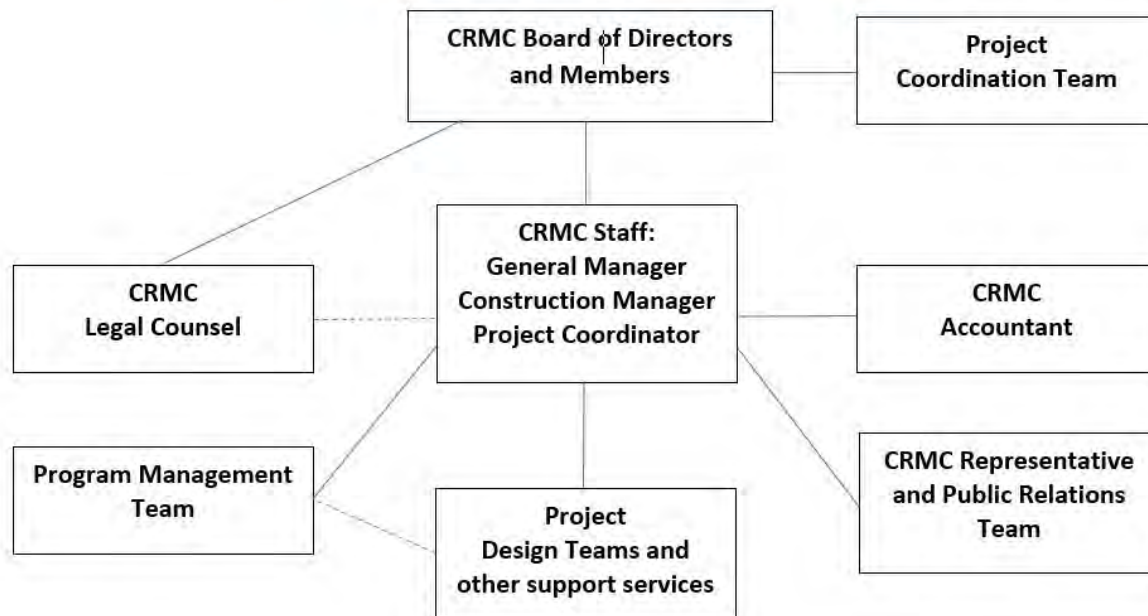


Figure 1

General Manager, Construction Manager, and Project Coordinator: The CRMC Board of Directors approved employment contracts in October of 2017 for the following CRMC employees:

- Tom Browning, General Manager
- Tim Feehan, Construction Manager (former General Manager)
- Charly Hoehn, Project Coordinator

General Counsel. The firm of Holland & Hart, LLP continues to serve as the role of General Counsel for CRMC, along with related legal support specialists.

Company Representative: William P Ruzzo, PE, LLC (Bill Ruzzo) continues to serve CRMC as a company representative through a standard consultant agreement.

Accountant: Pinnacle Consulting Group, Inc. continues to serve the CRMC as the official accounting firm of record.

Company Auditor: Haynie & Company continues to serve CRMC as the official auditing company of record.

Program Manager: The CDM Smith and Leonard Rice Engineers, Inc. (LRE) Team continues to provide program management services (PgM) for CRMC in support of CRMC goals and under the direction of CRMC staff.

Public Relations Team: CRMC is supported by Capitol Representatives and NORDEN41 for various PR, web update, and social media activities.

Financial Organization

Operations Account: The CRMC has two main bank accounts. A company operations account is held at First Bank of Colorado. Annual assessments for the CRMC members are deposited into this account, from which normal operating bills are paid. The annual operations budget is established annually at a Special Meeting of the CRMC Members.

Escrow Account. On or about October 15, 2015, each Member of the CRMC entered into an escrow agreement with the U.S. Bank National Association (Escrow Agent) and deposited funds (and/or entered into a CWCB loan agreement) into the Escrow Account in proportion to their Units in the CRMC. The Escrow Fund is a requirement of the Reallocation Report. Escrow funds are being systematically expended to cover the costs of engineering services and construction work for the CSRP. The CRMC accounting firm provides monthly status reports to the Board of Directors.

Project Coordination Team

A Project Coordination Team was created to provide senior management oversight of the implementation of the CSRP. The PCT is led by the Corps of Engineers. It is also comprised of the Water Providers and CDNR as indicated in the Compensatory Mitigation Plan.

Technical and Operations Advisory Committees

The Technical Advisory Committee (TAC) was launched in 2016 and continues to meet and operate as needed to review various CSRP design packages for consideration and approval. The TAC is instrumental for sending approved design packages to the CRMC and PCT for further approval prior to submitting information to USACE for final review, comment, and approval. The multi-step process helps to ensure CRMC and USACE that proper technical input has been provided prior to on the ground implementation of the required environmental mitigation and recreation modification activities.

The formation of the Operations Advisory Committee (OAC) has not been completed at this time. CRMC contemplates establishing the OAC sometime in 2018.

Chatfield Marina Coordination Committee

The Chatfield Marina Coordination Committee (CMCC) was established in 2011 to oversee the additional work to develop replacement plans for the current marina area that focus on the concept of like-kind replacement. The CMCC continues to meet as needed to address the requirements of CSRP, consider the comments and concerns of the marina vendor (Chatfield Marina, Inc), and coordinate activities of interest through CPW.

Reservoir Model Coordination Committee

The CRMC established a Reservoir Model Coordination Committee (RMCC) in December 2016 to oversee the reservoir water quality modelers (Consultant) work. Members of the RMCC include the CRMC General Manager, the CRMC Program Manager (PgM), the CRMC Technical Representative, a representative of the Members of the CRMC, and a representative of the Chatfield Watershed Authority. The RMCC will meet regularly with the Consultant to evaluate progress, review and comment on documents prepared by the Consultant, and provide technical direction to the Consultant. The Consultant is required to meet regularly with the RMCC to coordinate activities and to make milestone presentations to the RMCC. The RMCC is an advisory committee only, and all final decisions concerning actions and activities to be conducted by the Consultant shall be made by the CRMC, in its sole discretion. The Consultant has contracted with CRMC for the performance of the services.

Chapter 3

Design, Construction, & Opinion of Probable Cost

Design

Substantial portions of the final design packages for environmental mitigation measures and recreational modifications, required for CSR implementation, have been completed. Those design packages were submitted, reviewed, and approved by the necessary entities including (as appropriate depending on the specific package and its requirements) the TAC, CMCC, CRMC Board, PCT, and USACE (Omaha District). The approved design packages are:

- 1) Sugar Creek environmental enhancements;
- 2) Recreational Modifications, except for the Gravel pond area and water-side of the marina;
- 3) Plum Creek environmental enhancements;

Several more design packages are in progress for review and ultimate approval through the required steps mentioned above. They are:

- 1) South Platte River environmental enhancements (upstream of the reservoir);
- 2) Fluctuation Zone (tree removal and tree planting around the reservoir perimeter);
- 3) Marcy Gulch environmental enhancements (on-site mitigation);
- 4) Denver Botanic Gardens environmental enhancements (on-site mitigation);
- 5) Off-site environmental protection (Schmidt and Sandstone Properties).
- 6) Sugar Creek roadway and sediment reduction work;
- 7) Gravel Pond recreation modifications; and
- 8) Marina water-side modifications.

SUMMARY OF DESIGN PACKAGES

Environmental Mitigation Project No. 1 (EM1) — EFU Independent Technical Review:

Review and assessment of the environmental impacts measures as EFU debits; develop design criteria to improve and enhance vegetation communities; review target environmental mitigation measures; review preliminary design of environmental enhancements; recommend additional environmental enhancements; and conduct annual field surveys of the impacted area and mitigation sites. The CRMC retained ERO Resources Corporation for this work.

Environmental Mitigation Project No. 2 (EM2) — On-Site Mitigation and Borrow Area

Reclamation Design: Design of the on-site environmental mitigation and borrow areas reclamation that coincide with: The South Platte River, Plum Creek, and Marcy Gulch; Plum Creek 122.2 Plan restoration requirements; fluctuation zone habitat; wetlands; and the South Platte River aquatic habitat enhancement upstream of Chatfield Reservoir. The CRMC retained Muller Engineering Company for this work.

Environmental Mitigation Project No. 3 (EM3) — Sugar Creek Design:

Design of the Sugar Creek Sediment Mitigation Project including: surface modifications to Douglas County Road 67 (CR 67); culvert extensions / rundowns, sediment traps and stilling basins in CR 67; small mammal crossings on CR 67; Sugar Creek bank and stormwater rundown stabilization; enhanced upland PMJM critical habitat; and drop structures within the Sugar Creek channel. The CRMC retained CH2M Hill Engineers, Inc. for this work.

Environmental Mitigation Project No. 4 (EM4) — East Plum Creek Site Design: This project is no longer necessary and will not be implemented for CSRP.

Environmental Mitigation Project No. 5 (EM5) — Off-Site Mitigation Design:

Design of the off-site mitigation areas in the South Platte River, Plum Creek, and West Plum Creek watersheds tributary to Chatfield Reservoir; develop target percentages of EFU habitat types; identify parcels that could provide EFUs, provide initial estimate of acres of habitat for PMJM, birds, wetlands, and mature cottonwoods; estimate the number of EFUs that may be provided through off-site projects; prioritize parcels based on cost/EFU, and identify and survey reference areas of undisturbed habitat similar to that planned in the other mitigation areas. The CRMC retained Great Ecology, Inc. for this work.

Environmental Mitigation project No. 6 (EM6) — Property Evaluation and Conservation

Easements: Advise the project team regarding properties that may be available to provide EFU's. Provide consultation on cost estimates for procuring conservation easements or acquisition of properties for off-site mitigation. The CRMC retained Mark S. Weston, Ltd. to assist with this work. The contract expired in 2017 and was not amended. Currently, CRMC has engaged the services of Great Ecology, Inc. (EM5) to assist with off-site mitigation activities.

Environmental Mitigation project No. 7 (EM7) — Cultural Resources Management and

Investigation Services: Conduct literature research, perform cultural resources field investigations, develop avoidance and mitigation work plans; and provide field support during mitigation plan implementation. The CRMC retained ERO Resources Corporation for this work.

Environmental Mitigation project No. 8 (EM8) — Reservoir Water Quality Model

Development: Conduct data acquisition and analysis; model evaluation and selection; model development, calibration, and validation; model sensitivity analysis; and model documentation. The CRMC retained Hydros Consulting, Inc. for this work. Water Quality monitoring, which collects the necessary data for the water quality model, is performed by GEI Consultants, Inc. under separate contract with the CRMC.

Environmental Mitigation project No. 9 (EM9) — Water Rights Evaluation: Conduct water rights investigations for the purposes of supplying temporary CSRP construction water and environmental vegetation water. CRMC retained LRE for this work through the services rendered as part of the PgM Contract.

Recreational Modification Project No. 1 (RM) — Recreational Marina Design: To design of the Chatfield Reservoir Marina, which includes major facilities such as buildings, dockage, parking lots, and major utilities; and identify the applicable design criteria that may be applicable to the Marina, the CRMC retained SmithGroupJJR for the preliminary work and 75% design. CRMC retained Bellingham Marine, Inc. (BMI) for the remainder of the design-build work. Smith Group JJR was a sub-consultant to HDR, Inc. in the early stages of the development, but now has a direct contract with CRMC.

Recreational Modification Project No. 2 (RM2) — Design for Recreational Facility

Modifications: Design of the on-site Chatfield Reservoir recreational facilities such as roadways, swimming beach, boat ramps, picnic areas, and reclamation of borrow area and other disturbed areas, which includes major facilities such as buildings, parking lots, and major utilities. The CRMC retained HDR, Inc. for this work.

Tree Removal at Swim Beach: Remove approximately 5 acres of existing trees in the vicinity of the swim beach to accommodate significant earthwork being conducted as part of the RM construction work. CRMC contracted with Markit! Forestry, Inc for this work.

Tree Removal Demonstration Plot at Plum Creek: Selectively remove the dead, dying, or unhealthy trees, which were previously marked by Colorado State Forest Service, within the 10 acre Demo Plot near Plum Creek. The purpose of this contract is to collect data and learn about various means and methods for removing unwanted trees while leaving healthy trees within the subject tree stand. A combination of hand work and mechanical work will be utilized. CRMC contracted with Markit! Forestry, Inc. for this effort.

Schedule

The CSRP construction schedule is on track as of the date of this report. Regular updates to the overall schedule, road closures, and park day-use closures are posted on the CRMC website at www.chatfieldreallocation.org. CRMC Members are optimistic that compliance with all RM and EM work will be completed by spring of 2020 to allow for storage of available water in the newly reallocated storage space.

Construction

Actual construction activities for CSRP began in late 2017 with the implementation of the Sugar Creek environmental enhancement work. Shortly thereafter, CEI, Inc. was awarded work and began construction along Plum Creek for environmental mitigation, and within recreation modification day-use areas, including the North Boat Ramp. Also in late 2017, M.A. Mortenson, Inc. was awarded two agreements known as Limited Authorizations to Proceed (LATPs). Those LATPs allowed for a limited amount of work such as mobilization, utility location work, land surveying, pre-construction clearing, project management, traffic control, and earthwork along the west side of the reservoir. Construction updates are posted regularly to the CRMC website at www.chatfieldreallocation.org. Further information can be obtained by contacting CRMC staff directly at any time.

The season 1 activities (Fall of 2017 through mid-summer of 2018) include work on the North Boat Ramp, Massey Draw day use area, Eagle Cove day use area, Balloon Launch area, Deer Creek day use area, Swim Beach, Jamison day use area, Catfish Flats day use area, Fox Run day use area, and Plum Creek nature and day use areas.

The season 2 activities (Fall of 2018 through Spring of 2019) include portions of the Perimeter Road, pedestrian and bike trails, marina dredging, and replacement of the Chatfield marina docks, marina building, fueling station, and associated appurtenances.

Estimated Project Cost (Opinion of Probable Cost)

Pursuant to Article XV, Section D. of the WSA:

Within eighteen months after the effective date of this Agreement, the CDNR will reexamine and refine the total costs of the Chatfield Storage Reallocation Project, and give notice to the Government of such refined cost estimate in accordance with the notice provision of this Agreement. If the refined cost estimate exceeds one hundred and thirty four million dollars (\$134,000,000) by ten percent or more, the CDNR shall have the right, for a period of 90 days after the day on which it gives notice to the Government, to terminate this Agreement.

CDNR, in conjunction with the CRMC Members and PgM, refined the Total Project Cost Estimate based on preliminary designs and updated factors. CDNR provided a letter to Colonel John W. Henderson on April 8, 2016 stating:

Based upon the preliminary design work completed as of October 2017, CDNR received an updated preliminary cost estimate for the Chatfield Storage Reallocation Project which exceeds \$134 million by more than ten percent. CDNR notified all CRMC Members of the updated probable cost (e.g. \$171 million) and requested official responses as to whether each member would remain in the project or would exercise its right to use the “off ramp” provision included in the water provider agreements. All CRMC members elected to remain in the project.

CRMC staff continues to update the Total Project Cost Estimate on a monthly basis, which is being included in the Construction Manager’s report for each CRMC Board Meeting. This particular reporting mechanism began in January 2018.

The Estimated Total Project Cost of \$171 million, included in CDNRs “off ramp” letter to each of the CRMC members in October 2017, continues to be accurate as of the date of this report.

CSRP Estimated Total Project Costs

Item	Cost Estimate (\$) as of 01.01.18	Expended Costs (\$) as of 01.31.18	Percent Expended
CEI GMP	30,384,075.82	9,379,244.85	31
Mortenson GMP	46,480,384.00	1,419,013.30	3
Other RM Work	—	25,510.00	2
Marina — Water Side	10,000,000.00	36,000.00	0.36
South Platte Enhancements	16,171,147.00	0.00	0
Marcy Gulch Enhancements	300,000.00	0.00	0
Sugar Creek	4,000,000.00	1,081,677.95	31
Off-Site EFUs	10,000,000.00	836,745.12	10
Design / Engineering	11,709,499.57	10,097,662.39	89
Program Management	4,784,961.84	4,111,371.21	91
Construction Management	5,759,495.40	492,630.32	9
First Cost of Storage	16,285,392.00	0.00	0
Fluctuation Zone and Tree Removal	5,000,000.00	0.00	0
Water Quality Modeling and Monitoring	1,300,000.00	243,399.54	19
Xcel Energy Gas Line Relocation	4,000,000.00	0.00	0
Vegetation, Weed Treatment & Appraisals	1,460,953.54	883,196.02	62
Tree Inventory and Test Plot	149,574.00	46,476.00	32
Legal Services	300,000.00	101,169.43	34
Upper Plum Creek Enhancements	200,000.00	0.00	0
Financial Plan (Revenue Agreements)	1,000,000.00	29,670.00	3
USACE Bulkhead Gate	500,000.00	0.00	0
Denver Water	330,000.00	1,084.86	0
Shoreline Stabilization Plan	716,100.00	0.00	0
Stream Enhancement — Upstream	269,600.00	0.00	0
Stream Enhancement — Downstream	265,000.00	0.00	0
Insurance Policy — Builder’s Risk	154,583.00	154,583.00	100
Total	171,620,716.17	28,929,433.99	17

Chapter 4

Progress Summary

The status of key CSRP requirements is provided in the table below organized into Federal and Colorado requirements. The table includes the document name, relevant section in the document, a “short title” identifying the topic, specific language in the document describing any requirements, and a short description of the status. Where additional information about the status is needed, the information is included in footnotes at the end of the table.

This Annual Report does not repeat all the requirements listed in the referenced documents, but simply reports on the status of certain activities implemented to comply with the requirements. More detailed information is available by further review of the referenced documents.

Table 2 Summary Status of Federal and State Requirements for CSRP

Federal Requirements – Water Storage Agreement					
Item	Document	Section	Short Title	Requirement	Status
1	Water Storage Agreement	Article II-(B.1)	Reallocated Storage Milestones	<i>The CDNR shall have the right to utilize the storage space in the Chatfield Project between elevations 5,432 feet and 5,444 feet above NGVD, which is estimated to contain 20,600 acre-feet after adjustment for sediment deposits, provided that, in accordance with the Reallocation Report, the appropriate reallocated storage milestone as shown in Exhibit B attached to and made a part of this Agreement is met...</i>	Design and construction in progress and on track
2	Water Storage Agreement	Article II-(F)(1)	Payment Requirements for Reallocated Space	<i>The CDNR shall pay the following sums to the Government for the Chatfield Project costs attributable to the storage space reallocated in the Chatfield Project pursuant to paragraph A. of this Article.</i> <i>1. First Cost of Storage, lump sum amount of \$16,285,392.</i> <i>(see below for continuation of required payments)</i>	No action required at this time
3		Article II-(F)(2)	Payment Requirements for Reallocated Space	<i>1. 100 percent of specific RRR and R costs.</i>	No action required at this time
4		Article II-(F)(3)	Payment Requirements for Reallocated Space	<i>1. 8.99 percent of the joint-use RRR and R costs</i>	No action required at this time
5		Article II-(F)(4)	Payment Requirements for Reallocated Space	<i>1. 100 percent of the specific annual operations and maintenance expenses.</i>	No action required at this time

Federal Requirements – Water Storage Agreement					
Item	Document	Section	Short Title	Requirement	Status
6		Article II-(F)(5)	Payment Requirements for Reallocated Space	1. 8.99 percent of the joint-use annual operation and maintenance expenses.	No action required at this time
7		Article II-(F)(6)	Payment Requirements for Reallocated Space	1. 100 percent of District Engineer costs for other modifications.	No action required at this time
8		Article II-(F)(7)	Payment Requirements for Reallocated Space	1. 100 percent of District Engineer cost of government oversight of non-Federal Work.	In progress
9	Water Storage Agreement	Article II-(G)(1)	Payment Requirements for O&M	<p>Upon completion of the payment required by paragraph F.1. of this Article, the CDNR shall have a permanent right, under the provisions of the Act of 16 October 1963 (Public Law 88-140, 43 U.S.C. 390c-f), to the use of the water storage space in the Chatfield Project as provided in paragraph B. of this Article, subject to the following:</p> <p>1. The CDNR shall continue payment of joint-use annual operation and maintenance expenses (see below for continuation of required payments)</p>	No action required at this time
10		Article II-(G)(2)	Payment Requirements for O&M	2. The CDNR shall bear the repair, rehabilitation, reconstruction and replacement costs in accordance with paragraph F.2.	No action required at this time
11	Water Storage Agreement	Article II-(H)	Detailed Plans for Non-Federal Work	Prior to the CDNR issuing solicitations for construction of the non-Federal work, the CDNR shall provide the detailed plans for carrying out such work to the Government.	Final designs approved for Sugar Creek enhancement, Plum Creek mitigation, and recreation modifications (except Gravel Pond and marina water-side). Remainder of the detailed designs are in progress
12	Water Storage Agreement	Article II-(I)	Final As-Built Drawings	Upon completion of the non-Federal work, the CDNR shall furnish to the Government a copy of all final as-built drawings for the construction portion of such work.	As-builts to be submitted upon project phase completion

Federal Requirements – Water Storage Agreement					
Item	Document	Section	Short Title	Requirement	Status
13	Water Storage Agreement	Article II-(J)	Recreation OMRR&R Manual	<i>Upon completion of the recreation modifications, or functional portions thereof, by the CDNR, and final inspection of the recreation modifications, or functional portions thereof, by the Government, in accordance with paragraph I. of this Article, the CDNR shall prepare and furnish to the Government for review and approval a proposed Recreation Operation, Maintenance, Repair, Rehabilitation and Replacement Manual</i>	No action required at this time
14	Water Storage Agreement	Article II-(K)	Mitigation OMRR&R Manual	<i>Upon completion of the compensatory mitigation features, or functional portions thereof, by the CDNR, and final inspection of the compensatory mitigation features, or functional portions thereof, by the Government, in accordance with paragraph I. of this Article, the CDNR shall prepare and furnish to the Government for review and approval a proposed Mitigation Operation, Maintenance, Repair, Rehabilitation and Replacement Manual</i>	No action required at this time
15	Water Storage Agreement	Article II-(L)	Provide Lands, Easement, and Rights of Way	<i>In accordance with Article III of this Agreement, the CDNR shall provide all lands, easements, and rights-of-way, required for the non-Federal work related to the compensatory mitigation features on lands not owned by the United States, and the operation, maintenance, repair, rehabilitation and replacement of the completed compensatory mitigation features on such lands.</i>	Acquisition of off-site parcels for CSRP EFUs in progress. Required documents have been/will be submitted to USACE for review
16	Water Storage Agreement	Article II-(M)	Relocations	<i>In accordance with Article III of this Agreement, the CDNR shall perform all relocations required for performance of the non-Federal work, or required due to changes in the Chatfield Project pool elevations, resulting from the Chatfield Storage Reallocation Project.</i>	Work in progress (Note 1)
17	Water Storage Agreement	Article II-(O)	Agreements for Compensatory Mitigation (USFS Agreement). Sugar Creek Compensatory Mitigation	<i>The CDNR shall execute, or facilitate the execution of, agreements required for the construction, operation, maintenance, repair, rehabilitation and replacement of the compensatory mitigation features located within the boundaries of the Pike National Forest. The CDNR shall coordinate the agreement with the Government for review and approval prior to execution.</i>	Final design under review. Contractor selected. Work anticipated to begin May 2018. (Note 2)

Federal Requirements – Water Storage Agreement					
Item	Document	Section	Short Title	Requirement	Status
18	Water Storage Agreement	Article II-(O)	Agreements for Compensatory Mitigation (Douglas County Agreement) County Road 67 maintenance with Douglas County	<i>The CDNR shall execute, or facilitate the execution of, agreements required for the construction, operation, maintenance, repair, rehabilitation and replacement of the compensatory mitigation features located within the boundaries of the Pike National Forest. The CDNR shall coordinate the agreement with the Government for review and approval prior to execution.</i>	Final design under review. Contractor selected. Work anticipated to begin May 2018. (Note 3)
19	Water Storage Agreement	Article II-(P)	Encroachments on Compensatory Mitigation	<i>The CDNR shall prevent obstructions or encroachments on the compensatory mitigation features located on lands not owned by the United States (including prescribing and enforcing regulations to prevent such obstructions or encroachments) such as any new developments on lands, easements, and rights-of-way or the addition of facilities which might reduce the outputs produced by the compensatory mitigation features, hinder operation and maintenance of the compensatory mitigation features, or interfere with the proper function of the compensatory mitigation feature</i>	Off-site environmental mitigation sites – in progress
20	Water Storage Agreement	Article III-(A)(2)	Mineral Assessment Report	<i>For those lands identified in the target habitat (with associated buffers) in the Compensatory Mitigation Plan where the mineral rights have been severed from the surface estate, the CDNR shall obtain a Mineral Assessment Report for each property indicating the potential for mineral development, including the potential for mining and surface disturbance, and submit the reports to the Government for review.</i>	Minerals Report for Sandstone Ranch submitted to USACE for review. Minerals Report for the Schmidt Construction Property is underway.
21	Water Storage Agreement	Article III-(A)(3)	Non-Targeted Offsite Mitigation Properties	<i>The CDNR shall provide the Government with general written descriptions, including maps as appropriate, of such lands for the Government's review and approval [for offsite mitigation areas that are not included in the targeted properties identified in the CMP].</i>	In progress
22	Water Storage Agreement	Article III-(A)(4)	Acquire Lands, easements, and rights-of-way	<i>...the CDNR shall acquire all lands, easements, and rights-of-way required for that work. Furthermore...the CDNR shall acquire all lands, easements, and rights-of-way required by Article ILL. of this Agreement. The CDNR shall ensure that lands, easements, and rights-of-way ... are retained in public ownership or in the ownership of a non-profit organization approved by the Government...</i>	In progress Agreements with Douglas County Open Space and/or Douglas Land Conservancy are being developed

Federal Requirements – Water Storage Agreement					
Item	Document	Section	Short Title	Requirement	Status
23	Water Storage Agreement	Article IV-(A)(1)	Funding First Cost of Storage	<i>Not later than 45 calendar days after the CDNR is notified by the District Engineer that the first reallocated storage milestone, as shown in Exhibit B to this Agreement, has been met, the CDNR shall provide the Government with the lump sum payment of \$16,285,392 required by Article II.F.1. of this Agreement...</i>	No action required at this time
24	Water Storage Agreement	Article V-(B & C)	Water Meters and Measuring Devices	<i>The CDNR agrees to furnish and install, without cost to the Government, suitable meters or measuring devices satisfactory to the District Engineer for the measurement of water that is withdrawn from the Chatfield Project by any means other than through the Chatfield Project outlet works or the ditch outlet works.</i>	No action required at this time
25	Water Storage Agreement	Article V-(D)	Control Environmental Pollution	<i>During any construction, operation, maintenance, repair, rehabilitation or replacement by the CDNR of facilities that it owns, operates or controls... or replacement ... of recreation modifications or the compensatory mitigation features, specific actions will be taken to control environmental pollution...</i>	In progress
26	Water Storage Agreement	Article VII (A)	Project Coordination Team	<i>In order to provide senior management oversight of the implementation of the non-Federal work, the CDNR and the Government, not later than 30 calendar days after the effective date of this Agreement, shall appoint named representatives to a Project Coordination Team, which shall include representatives of the Water Providers.</i>	Complete
27	Water Storage Agreement	Article IX (A)	Hazardous Substances	<i>After execution of this Agreement and upon direction by the District Engineer, the CDNR shall perform, or ensure performance of, any investigations for hazardous substances that the Government or the CDNR determines to be necessary to identify the existence and extent of any hazardous substances regulated under the Comprehensive Environmental Response, Compensation, and Liability Act (42 U.S.C. 9601-9675; hereinafter "CERCLA"), that may exist in, on, or under lands, easements, and rights-of-way that the CDNR proposes to acquire pursuant to Article II.L of this Agreement.</i>	In progress

Federal Requirements – Water Storage Agreement					
Item	Document	Section	Short Title	Requirement	Status
28	Water Storage Agreement	Article X (A)	Historic Preservation	<i>In the event that the Government determines that any identification, survey, or evaluation of historic properties is required for construction of the non-Federal work, the CDNR shall perform such identification, survey, or evaluation in accordance with this paragraph and other written directions of the Government</i>	In progress
29	Water Storage Agreement	Article XIV (A)	Records and Audits	<i>Not later than 90 calendar days after the effective date of this Agreement, the Government and the CDNR shall develop procedures for keeping books, records, documents, or other evidence pertaining to costs and expenses incurred pursuant to this Agreement.</i>	In Progress. CRMC retains copies of all contracts, amendments, and change orders related to implementation of CSRP.
30	Water Storage Agreement	Article XIV (B)	Audit Act Compliance	<i>...the CDNR is responsible for complying with the Single Audit Act Amendments of 1996 (31 U.S.C. 7501-7507), as implemented by Office of Management and Budget (OMB) Circular No. A-133 and Department of Defense Directive</i>	CRMC Audit #1 has occurred, and audit #2 is underway.
31	Water Storage Agreement	Article XV-(D)	Refine Cost Estimate	<i>Within eighteen months after the effective date of this Agreement, the CDNR will reexamine and refine the total costs of the Chatfield Storage Reallocation Project, and give notice to the Government of such refined cost estimate in accordance with the notice provision of this Agreement.</i>	Complete
32	Water Storage Agreement	Exhibit B	Establish Escrow Account	<i>The CDNR and the Water Providers, through the sub-agreements referenced in Article VI of this Agreement, will establish an environmental escrow fund that will be at least equal to the estimated cost of fully implementing and completing the Compensatory Mitigation Plan (CMP) (Appendix K of the Reallocation Report) including a reasonable contingency.</i>	Complete
Federal Requirements – FR/EIS					
33	FR\EIS Appendix K Compensatory Mitigation Plan	Section 6.3.2.3	Monitoring of Sugar Creek	<i>The Sugar Creek critical habitat mitigation area will be monitored annually for at least 5 years following implementation of the mitigation activities and reported annually (CMP Section 6.3.2.3, p86)</i>	Construction recently completed. Monitoring has commenced.

Federal Requirements – Water Storage Agreement					
Item	Document	Section	Short Title	Requirement	Status
34	FR\EIS Appendix K Compensatory Mitigation Plan	Section 7.1.3	Offsite Mitigation Process	<i>Property evaluations will be the responsibility of the Chatfield Water Providers (Section 7.2.1). The Chatfield Water Providers will coordinate with the Project Coordination Team Section 7.2.1) regarding the protection of properties...All protected properties will be managed by the Chatfield Water Providers, or its designee, to benefit one or more of the target environmental resources. The Chatfield Water Providers will have 2 years from submittal of the protection documentation to develop a management plan for the protected property and submit it to the Project Coordination Team and Technical Advisory Committee for their review and comment and approval by the Corps. [CMP, Section 7.1.3, p96].</i>	In progress
35	FR\EIS Appendix K Compensatory Mitigation Plan	Section 7.2.1	Establish Escrow Fund	<i>The Chatfield Water Providers will establish an environmental mitigation escrow fund that will be at least equal to the estimated cost of fully implementing and completing the CMP including a reasonable contingency. The funding amount will be established by the Project. [CMP Section 7.2.1 Environmental Mitigation Escrow Fund, p103]</i>	Complete
36	FR\EIS Appendix K Compensatory Mitigation Plan	Section 7.3	The Mitigation Company	<i>Each of the 12[1] Chatfield Water Providers will be required to be a member of the Chatfield Reservoir Mitigation Company, which will remain incorporated until all compensatory mitigation obligations have been successfully met and all monitoring and financial obligations are completed. [CMP Section 7.3 p108]</i>	Complete

Federal Requirements – Water Storage Agreement					
Item	Document	Section	Short Title	Requirement	Status
37	FR\EIS Appendix K Compensatory Mitigation Plan	Section 7.3	Sugar Creek Cost Share Agreement	<i>The mitigation for impacts to designated critical habitat along Sugar Creek will be enforced by the Challenge Cost Share Agreement between Douglas County, the USFS, and the Chatfield Reservoir Mitigation Company (Appendix E)... [CMP Section 7.3 Responsibilities for Compensatory Mitigation, p108]. The parties will finalize and sign the agreement between the final FR/EIS and ROD. Any revisions to this version of the agreement are not anticipated to significantly depart from the terms and conditions of the current version of the agreement. [CMP Section 7.3 Responsibilities for Compensatory Mitigation, pE-1]</i>	Complete
38	FR\EIS Appendix K Compensatory Mitigation Plan	Section 7.3	Annual Report of Overall Progress	<i>The Chatfield Reservoir Mitigation Company would annually elect directors (currently assumed to be five) to manage the implementation of all mitigation obligations. The responsibilities of the directors would include:... annual report of overall progress... [CMP, Section 7.3, p109]</i>	Complete for 2016 and 2017
39	FR\EIS Appendix K Compensatory Mitigation Plan	Section 7.3	Technical Advisory Committee	<i>Two such committees, the Technical Advisory Committee and the Operations Advisory Committee, will be created to provide assistance with technical and operational issues...The Technical Advisory Committee will provide review and comments on technical components of the implementation process... [CMP Section 7.4, p110]</i>	Complete
40	FR\EIS Appendix K Compensatory Mitigation Plan	Section 7.3	Operations Advisory Committee	<i>Two such committees, the Technical Advisory Committee and the Operations Advisory Committee, will be created to provide assistance with technical and operational</i>	No action at this time. OAC expected to be created in 2018

Federal Requirements – Water Storage Agreement					
Item	Document	Section	Short Title	Requirement	Status
				<i>issues...The Operational Advisory Committee will provide review and comments on mitigation obligations related to operational issues. The principal goal of the committee is to facilitate efficient collective operations. [CMP Section 7.4, p110]</i>	
41	FR\EIS Appendix K Compensatory Mitigation Plan	Section 7.4	Annual Mitigation Monitoring Reports	<i>The Chatfield Water Providers will provide annual monitoring reports to the Project Coordination Team and the Technical Advisory Committee for review and comment. The reports will address the monitoring actions listed in Section 7.4 for each mitigation activity. [CMP Section 7.4.1, p112]</i>	No action required at this time
42	FR\EIS Appendix K Compensatory Mitigation Plan	Section 7.4	As-Built Reports	<i>For all compensatory mitigation activities involving construction, earth moving, or grading, including the restoration and revegetation of borrow areas and other temporary disturbance within Chatfield State Park, an as-built report will be provided to the Corps and Colorado State Parks no later than 60 days following completion of the mitigation activity. [CMP, Section 7.4.1.1 p113].</i>	No action required at this time
43	FR\EIS Appendix K Compensatory Mitigation Plan	CMP Appendix E	Sugar Creek Operating and Financial Plan Agreements	<i>The Company agrees to budget and set aside funds for payment to the County in an initial amount of \$48,750 per year, which reflects the initial estimate of annual invoices for the Reimbursed County Maintenance Work, plus a 25 percent contingency.[CMP Appendix E, pE-25]...Since the asphalt resurfacing of the lower segment of CR 67 is anticipated to occur every 5 to 7 years, and will require increased funding, the Company shall set aside \$20,000 per year in additional funds for this work. These funds shall be escrowed in a separate account and may not be expended for any other purpose. [CMP Appendix E, pE-25]</i>	In progress

Federal Requirements – Water Storage Agreement					
Item	Document	Section	Short Title	Requirement	Status
44	FR\EIS Appendix M Recreation Facilities Modification Plan	Chapter 2 Site Characteristics	Cultural Resource Inventory	<i>An inventory of cultural resource sites prepared by the USACE (USACE 2007) was reviewed to determine if known cultural resource sites would be affected by the reallocation plan. Based on this review, any cultural resource sites impacted by this plan will be handled according to USACE, and the Colorado State Historical Preservation Office guidelines. However, as more detailed plans are developed and construction sites are better defined, the inventory will be further reviewed. [RFMP p2-23]</i>	In progress
45	FR\EIS Appendix M Recreation Facilities Modification Plan	Chapter 3 Recreation Facilities Modifications	In-Kind Replacement	<i>An important assumption that guided the conceptual design effort was that no facility or program area would lose any capacity or functionality as the result of relocation or modification. Put another way, the recreation modification plan provides for in-kind [1] replacement of facilities affected by higher water levels. [RFMP, p3-1]</i>	In progress
46	FR\EIS Appendix M Recreation Facilities Modification Plan	Chapter 4 Marina Operations	Marina Operations	<i>[The] closure of the park or other interruptions to visitation during the construction of facilities included within the recreation relocation plan would have a significant economic impact. The magnitude of this impact will depend on construction timing, how it is phased, and other considerations that can't be defined with precision at this point in time. This underscores the need for development of an agreement between State Parks and reallocation project participants that accounts for potential revenue losses once a construction program has been defined. [RFMP p4-1].</i>	Marina financial plan completed and executed. First payment to CMI has been made.

Federal Requirements – Water Storage Agreement					
Item	Document	Section	Short Title	Requirement	Status
47	FR\EIS Appendix M Recreation Facilities Modification Plan	Chapter 4 Marina Operations	Lost Revenue Agreements	<i>[The] closure of the park or other interruptions to visitation during the construction of facilities included within the recreation relocation plan would have a significant economic impact. The magnitude of this impact will depend on construction timing, how it is phased, and other considerations that can't be defined with precision at this point in time. This underscores the need for development of an agreement between State Parks and reallocation project participants that accounts for potential revenue losses once a construction program has been defined. [RFMP p4-1].</i>	In progress
48	FR\EIS Appendix N Chatfield Marina Reallocation Impact Assessment	Chapter 6 Moving Forward — Next Steps	Marina Design and Construction	<i>The initial task will be to integrate the alternatives from this report into the Environmental Impact Statement, allowing the public review cycle to move forward. During that time, the stakeholders of the project need to develop an implementation strategy that allows the preparatory work to proceed in a logical progression... Negotiation of responsibility for the engineering and design costs is a significant effort in itself. Once the agreements are in place and documented in a Memorandum of Understanding, design and engineering may commence. [Appendix N p29]</i>	In progress
49	FR\EIS Appendix Z Tree Management Plan	Section 2.1	Adaptive Management Monitoring	<i>The adaptive management approach would entail leaving these trees in place and then monitoring the trees for signs of severe stress and mortality, and removing unhealthy and dead trees from this area on an as needed basis to eliminate potential risks to visitor and dam safety. [TMP Section 2.1, p4]</i>	ATMP in progress

Federal Requirements – Water Storage Agreement					
Item	Document	Section	Short Title	Requirement	Status
50	FR\EIS Appendix Z Tree Management Plan	Section 2.2	Tree Removal Analysis	<i>There is an interest in leaving a small portion of trees in place below 5439 ft. msl to provide wildlife and fisheries habitat. Specific trees to be left in place would be identified and evaluated by a team of representatives from the Corps, Colorado State Parks (Parks), and the Colorado Division of Wildlife (CDOW). The Chatfield project's designated Special Technical Advisors would be given the opportunity to provide input to this process. [TMP Section 2.2, p5]</i>	Tree survey and identification completed by Colorado State Forest Service
51	FR\EIS Appendix GG Adaptive Management Plan	Oversight and Schedule	Monitoring for Adaptive Management	<i>Annual monitoring reports will include information on needed and proposed adjustments and uncertainties. [AMP, p5] The schedule for implementing adaptive management is variable. By their very nature, adaptive management actions are implemented on an "as needed" basis and as informed by monitoring. Table 1 provides a schedule of how adaptive management will likely be implemented. [AMP, p6]</i>	No action required at this time
52	FR\EIS Appendix GG Adaptive Management Plan	Water Quality Core Objectives	Annual Water Quality Monitoring Report	<i>The water quality monitoring results and water quality standards attainment assessment will be included in an Annual Water Quality Monitoring Report that is presented to the TAC and PCT. [AMP, p20-21]</i>	2015 and 2016 reports previously provided. 2017 report in progress
53	FR\EIS Appendix GG Adaptive Management Plan	Water Quality Contingencies	Annual Water Quality Modeling Report	<i>Once initially developed, a dynamic water quality model would be applied annually on an ongoing basis...Water quality monitoring, modeling and results will be included in an Annual Water Quality Modeling Report...[AMP p23]</i>	In progress

Federal Requirements – Water Storage Agreement					
Item	Document	Section	Short Title	Requirement	Status
54	FR\EIS Appendix GG Adaptive Management Plan	Operations Contingencies	CRMC Member Water Rights Releases	<i>As part of this AMP, the PCT and the Chatfield Reservoir Mitigation Company will explore ways to adjust their management and operation of the reallocated storage to further minimize impacts on the target environmental resources considering system constraints and project yield. [AMP p30].</i>	No action required at this time
55	FR\EIS Addendum 1 Appendix KK Biological Opinion for Preble's Mouse	p15	Annual Monitoring Reports	<i>The Chatfield Water Providers would provide annual monitoring reports to the Project Coordination Team and the Technical Advisory Committee. A Service representative will participate on the Technical Advisory Committee. The Chatfield Water Providers will also provide annual reports to the Service addressing impacts and mitigation to the Preble's mouse and its habitats and compliance with the terms and conditions specified in this biological opinion [BO p15].</i>	No action required at this time
State Requirements - FWRMP					
56	Fish, Wildlife and Recreation Mitigation Plan	Section 4.1.3.1	Regular Forecast Meetings	Parties will meet bi-monthly February through October of each year to share their knowledge of current conditions and discuss forecasts for future Chatfield operations. [FWRMP, Section 4.1.3.1, p19].	No action required at this time
57	Fish, Wildlife and Recreation Mitigation Plan	Section 4.1.3.3	Water Releases	In general, Project participants in consultation with CPW, will use good faith efforts to adjust timing and amount of water releases from Chatfield so as to beneficially impact recreation and the environment. [FWRMP, Section 4.1.3.3, p19]	No action required at this time
58	Fish, Wildlife and Recreation Mitigation Plan	Section 4.1.4	Annual Monitoring Reports	By their very nature, adaptive management actions are implemented on an "as needed" basis and as informed by monitoring. The monitoring of impacts and mitigation will provide important information and feedback for an interactive process of refining action to	No action required at this time

Federal Requirements – Water Storage Agreement					
Item	Document	Section	Short Title	Requirement	Status
				minimize impacts and address uncertainties. Annual monitoring reports will include information on needed and proposed adjustments and uncertainties. [FWRMP, Section 4.1.4, p21]	
59	Fish, Wildlife and Recreation Mitigation Plan	Section 4.2.1.1	Upstream Habitat and Recreation Mitigation	The Project Participants will fund stream habitat improvements on up to 0.7 miles of the main stem of the South Platte River above Chatfield Reservoir above the highest point of potential inundation from the Project. [FWRMP, Section 4.2.1.1, p22]...In addition, as part of the Compensatory Mitigation Plan, the Participants will implement the Sugar Creek Sediment Mitigation Project... [FWRMP, Section 4.2.1.1, p22]...As a third mitigation element, the Participants will construct the Plum Creek Restoration... [FWRMP, Section 4.2.1.1, p22]	Final design complete for South Platte package. Review in progress. Sugar Creek in progress. Plum Creek in progress.
60	Fish, Wildlife and Recreation Mitigation Plan	Section 4.2.1.2	Downstream Habitat and Recreation Mitigation	To mitigate the potential impacts of increased storage in Chatfield Reservoir, the Project Participants will fund stream habitat improvements on up to 0.5 miles of the main stem of the South Platte River downstream of Chatfield Reservoir. [FWRMP Section 4.2.1.2, p23].	No action
61	Fish, Wildlife and Recreation Mitigation Plan	Section 4.3.3	Weed Control Measures	The Project Participants will take responsibility for controlling the spread of noxious or invasive weeds associated with the Project's increase in water level fluctuations. [FMRMP, Section 4.3.3, p34].	No action required at this time
62	Fish, Wildlife and Recreation Mitigation Plan	Section 5.1.2	Marina Replacement Plan	The mission of the Chatfield Marina Coordination Committee (CMCC) is to advance plans for replacement of the current marina area improvement with like-kind facilities. [FWRMP, Section 5.1.2 The Marina Replacement Plan, p56].	Final design in progress
63	Fish, Wildlife and Recreation Mitigation Plan	Section 5.1.3	Temporary CPW Resident Engineer	The project participants will fund the temporary hiring by CPW of a qualified engineering employee during the design and construction activities related to recreation facilities modifications and environmental mitigation with the Chatfield State park property. [FWRMP Section 5.1.3, p61]	In progress

Federal Requirements – Water Storage Agreement					
Item	Document	Section	Short Title	Requirement	Status
64	Fish, Wildlife and Recreation Mitigation Plan	Section 5.2	Financial Mitigation	The Mitigation Company will be a Colorado non-profit corporation named the Chatfield Reservoir Mitigation Company (CRMC). It will be formed to accomplish the financial and mitigation obligations from the Chatfield Reservoir Reallocation Project (Reallocation Project). [FWRMP Section 5.2, p61]	Complete
65	Fish, Wildlife and Recreation Mitigation Plan	Section 5.2	CPW Escrow Account	An independent escrow agent will be selected and paid for by the Water Providers to manage mitigation contributions and payments and prepare an annual report documenting activity. Upon execution of this Agreement, the Water Providers will establish an interest-bearing CPW Account with initial funding equivalent to 12 months of future, expected annual mitigation payments... [FWRMP Section 5.2, p65].	No action required at this time
66	Fish, Wildlife and Recreation Mitigation Plan	Section 5.2	Financial Mitigation — CPW Concessionaires	This agreement affirms that the Water Providers will present a mitigation proposal to the marina and livery concessionaires that CPW determines to be fair and reasonable. [FWRMP Section 5.2, p66]	In progress
67	Fish, Wildlife and Recreation Mitigation Plan	Section 5.2	Marketing Plan	Mitigation Company will retain a specialist to manage Reallocation project-related marketing and public relations needs during and after Reallocation Project construction. [FWRMP, Section 5.2, p65]	Complete
State Requirements – Water Providers Agreement					
68	Water Providers Agreement	Article VI-(J)	Refinement of Total Cost	Within 24 months of the effective date of this Agreement, the Total Project Costs will be re-examined and refined.	Complete
69	Water Providers Agreement	Article VI-(H)	Force Majeure Report	Neither Party to this Agreement shall be liable for any delay or failure to perform due solely to conditions or events of force majeure, as that term is defined in this paragraph; provided that: (i) the nonperforming Party gives the other Party prompt written notice describing the particulars	No action required at this time

Federal Requirements – Water Storage Agreement					
Item	Document	Section	Short Title	Requirement	Status
				of the force majeure; (ii) the suspension of performance is of no greater scope and of no longer duration than required by the force majeure event or condition; and (iii) the non-performing Party proceeds with reasonable diligence to remedy its inability to perform and provides weekly progress reports to the other Party describing the remedial actions taken.	

LEGEND:

“Complete”	All the required actions have been met.
“No action required at this time”	Actions are required at a future date.
“No Action”	Required actions have not been initiated.
“Final design in progress”	Required actions have been initiated as part of final design.
“In Progress”	Required actions have been initiated.

TABLE NOTES:

- Note 1 Since the Project is not expected to cause a person, personal property, or a utility to be displaced, nor does the Project involve federal financial assistance, the opinion of the CRMC is that the Act does not apply.
- Note 2 This agreement, originally titled as the “Challenge Cost Share Agreement”, has been replaced by an agreement with the same substantive requirements entitled “Non-Funded Participating Agreement” between the CRMC and the U.S. Forest Service (USFS) as required by the USFS.
- Note 3 This agreement is referred to as the Operating and Financial Plan Agreement between Douglas County and the Chatfield Reservoir Mitigation Company Inc. Related to Maintenance of County Road 67 and Its Adjacent Area.
- Note 4 This information will be included in the Operating and Financial Plan Agreement between Douglas County and the Chatfield Reservoir Mitigation Company Inc. Related to Maintenance of County Road 67 and Its Adjacent Area
- Note 5 CDNR April 8, 2016. Chatfield Storage Reallocation Project. Letter from Robert Randall, CDNR to Colonel John W. Henderson.
- Note 6 CDNR December 22, 2015. Letter from CDNR Director Mike King to Colonel John Henderson
- Note 7 CRMC October 8, 2015. Articles of Incorporation of Chatfield Reservoir Mitigation Company, Inc. a Colorado Non-Profit Corporation.
- Note 8 The TAC was formed in March 2016 and held its’ first meeting on April 27, 2016.
- Note 9 The CRMC has retained Capital Representatives to provide marketing and public relations oversight; the firm of NORDEN41 to update the website, prepare social media information for the public, and create short videos for posting; and the firm of Moxiecran Media to create a video that tells the story of the CRMC’s role in responding to regional water demands.

References

October 8, 2015. Articles of Incorporation of Chatfield Reservoir Mitigation Company, Inc. A Colorado Non-Profit Corporation.

October 15, 2015. Escrow Agreement

October 12, 2015. Bylaws of Chatfield Reservoir Mitigation Company, Inc.

Chatfield Reservoir Reallocation Project Participants, January 2014. Fish, Wildlife and Recreation Mitigation Plan.

CRMC Memorandum to CPW dated January 8, 2016. Chatfield Storage Reallocation Project – FWRMP (122.2Plan) Clarification

William P. Ruzzo, PE, LLC August 25, 2015. Program Manager Selection Process.

William P. Ruzzo, PE, LLC December 28, 2015. CPA Accounting Firm Selection Process.

William P. Ruzzo, PE, LLC December 29, 2015. Legal Counsel Selection Process.

Smith Group JJR December 2015. Chatfield Reservoir Marina Study

CDNR April 8, 2016. Chatfield Storage Reallocation Project.