

## Construction Schedule Fall 2018 – Spring 2019

Chatfield Reservoir Mitigation Company (CRMC), in collaboration with the project’s contractors and Chatfield State Park, has prepared a construction schedule for fall 2018 through spring 2019.

Remaining construction activities and revegetation efforts along the west side of the Park associated with Season One construction are expected to be completed by December 2018.

Impacted construction areas in Season Two include the Marina (docks and landside), South Boat Ramp, Roxborough Cove, Plum Creek Day Use Area, Kingfisher, Gravel Pond, and a portion of the Perimeter Road from Jamison Day Use Area to the Park Headquarters. Overall, CRMC is anticipating reopening a large majority of the recreational areas impacted by Memorial weekend 2019.

[Click here](#) to find a Season Two construction closures handout, effective October 1, 2018.

### Marina (Docks)

All boats docked at the Marina must be removed no later than September 14, 2018. The new dock system is scheduled to be completed by May 1, 2019.

### Marina (Landside Facilities)

All landside facilities at the Marina will close for construction on September 15, 2018. It is anticipated that the new facilities will reopen by May 24, 2019.

### South Boat Ramp

The South Boat Ramp will close on September 4, 2018. Only Marina patrons will be able to utilize the South Boat Ramp for the removal of boats up until September 14, 2018. The new South Boat Ramp is scheduled to reopen by May 1, 2019.

### Campgrounds

The Campgrounds will remain open throughout construction activities. However, please note that daytime construction activities will occur near Loop A. Effective October 1, 2018, the Campgrounds will only be accessible via the Park’s South Entrance off Titan Road and North Roxborough Road.

### Perimeter Road (Jamison Day Use Area to Park Headquarters)

Due to the replacement of the South Platte River bridge and the construction activities at the Gravel Pond and Kingfisher, the Perimeter Road will be closed starting October 1, 2018, with an anticipated reopening date by May 24, 2019. The closure will be in effect from Jamison Day Use Area to Park Headquarters.

Please note that all Park amenities on the west side of the Park (Dog Off Leash Area to Jamison) will need to be accessed via the Park’s West Entrance off Wadsworth Boulevard. Campgrounds, Model Airplane Runway, and Park Headquarters will only be accessible via the Park’s South Entrance off Titan Road and North Roxborough Road.

### Roxborough Cove

Roxborough Cove will be closed for construction beginning September 15, 2018 and is anticipated to reopen by May 1, 2019.

### Plum Creek Day Use Area

As of August 10, 2018, Plum Creek Day Use Area is closed. It is anticipated to reopen by May 1, 2019.

### Plum Creek Trails (within Plum Creek Nature Area)

The civil work has been completed, however, extensive revegetation efforts along Plum Creek will continue until November 1, 2018. The recreational trail is anticipated to reopen sometime in November 2018, after revegetation efforts are complete.

### Kingfisher Day Use Area and Gravel Pond

Kingfisher Day Use Area and the Gravel Pond will be closed for construction beginning October 1, 2018. Both are anticipated to reopen by May 24, 2019.

### Swim Beach

The parking lots and access to the shoreline are on track to reopen by October 1, 2018. While the area will be open, the new facilities will remain closed.

### Jamison Day Use Area

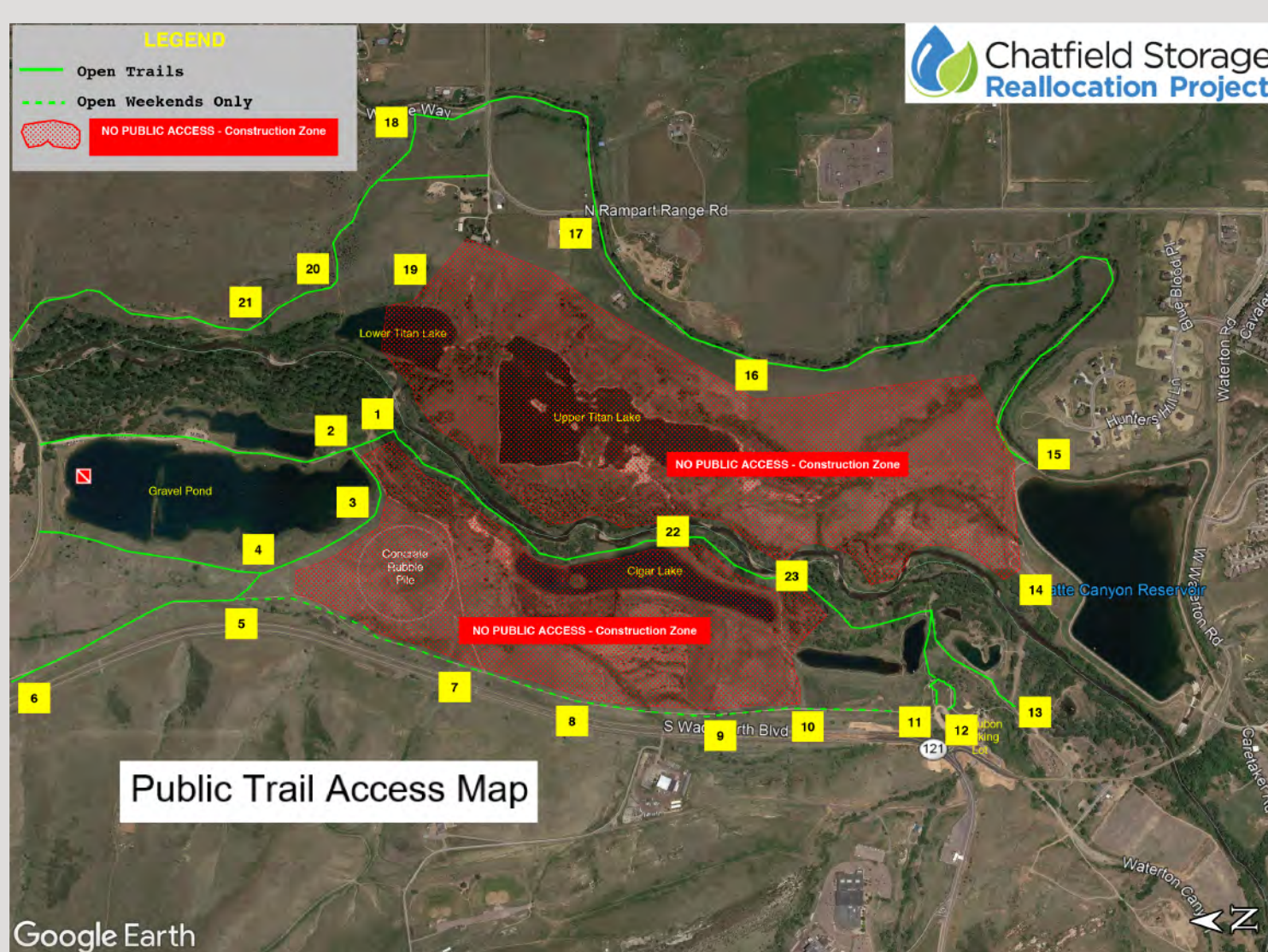
To give the revegetation efforts the best chance to establish, landscaping and seeding activities have been scheduled for shortly after Labor Day. As such, Jamison Day Use Area is planned to reopen by October 1, 2018.

### Catfish Flats Day Use Area and Fox Run Day Use Area

Due to a conflict with the relocation of Xcel Energy’s gas line, Catfish Flats and Fox Run Day Use Area are anticipated to reopen by December 1, 2018.

### Trails

The reopening of recreational trails along the west side of the park have been delayed due in part to Xcel Energy’s gas line relocation. The trail system is anticipated to be completed from Deer Creek to Fox Run by December 2018.



### South Platte River Area Mitigation

Environmental mitigation activities are well underway within the South Platte River area. CRMC, Chatfield State Park, and the contractor have worked closely to clearly mark closed trails and define construction areas. Please [click here](#) for a detailed map of the current trails that are open for multi-use. For your safety, we are depending on the public’s cooperation to stay off of closed trails and out of construction areas. The trail closures are anticipated to remain in place until Summer 2019.

### North Boat Ramp

While construction at the North Boat Ramp has been completed, please note that Chatfield State Park closes the North Boat Ramp when ice conditions develop. The North Boat Ramp is typically closed between December 1 and March 1 of each year. Please visit CPW’s boating page at: <http://cpw.state.co.us/placestogo/parks/Chatfield/Pages/Boating.aspx> for more information.

Please continue to visit <https://chatfieldreallocation.org/construction/> for regularly updated information on construction activities and closures.

## FOR MORE INFORMATION

For questions, contact us at: [info@chatfieldreallocation.org](mailto:info@chatfieldreallocation.org)

For detailed information on the Chatfield Storage Reallocation Project, or to view the project video, please go to our website [chatfieldreallocation.org](http://chatfieldreallocation.org)

Follow us on:

