

CHATFIELD STABLES

The Chatfield Stables is located on the old ranch land in what is now part of Chatfield State Park. It offers a timeless experience for leisurely horseback exploration of the nearby trails and streams.

The Stables are open for business all year round.

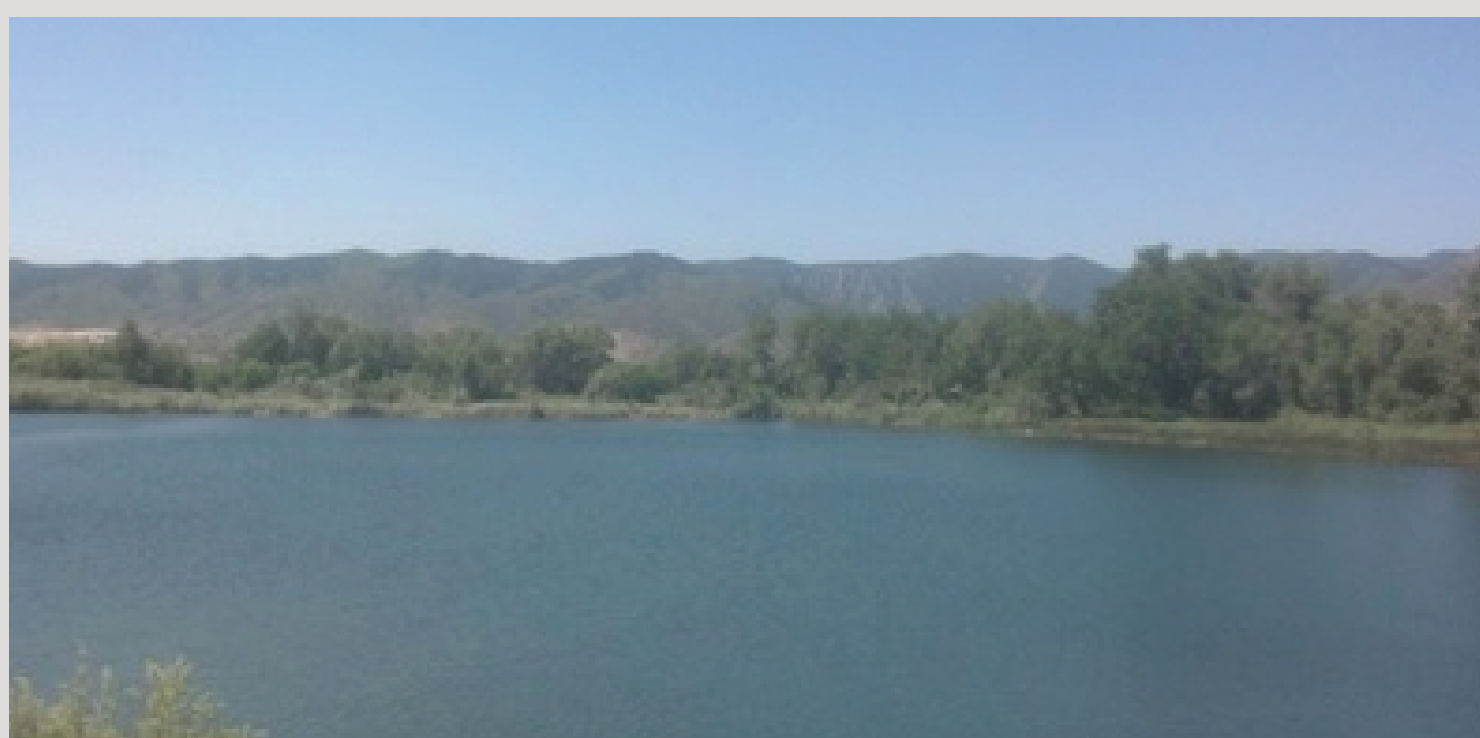
The Stables provide rental horses for trail rides and boarding facilities that are open to the public. Tack sheds and hitch rails are also provided, along with a covered pavilion for group picnics. Natural surface equestrian trails are accessed from the stables. The staff offers wrangler-guided horseback riding throughout the Park.

Bob Hantschel, owner of the Stables, says, "Enjoy a true Colorado trail ride at Chatfield Stables. Our scenic trails are sure to delight any rider. Lots of trails in thousands of acres. With the Platte River running through, we have water features and views of the foothills along the many miles of prairie and forest trails."



Bob also commented that "Our horses are great for all experience levels. We have raised many of them since they were little foals; they love their job and do it well. We have approximately 50 horses, each one has a name and special personality. Feel free to visit our horses, there is always someone near the fence waiting to be pet. Or, to learn more about the horses (and all of the services), visit our website www.chatfieldstables.com."

Riding the trails within Chatfield State Park on a horse is likely the mode of transportation most in keeping with the long-term history of the land, the streams, and the local lifestyle. Before Chatfield Reservoir was built in the 1970's, the area was open ranch land, located at the confluence of Plum Creek and the South Platte River. Riders could easily view stream paths, which were outlined with trees as they rode through waving grass. A few historic photos of the old ranch land are on display at the Manor House in Highlands Ranch.



Otherwise, most of the images available today show the lake and the trees that have grown up around it since the reservoir was constructed and filled.

Although the State Park is experiencing major construction activities related to the Chatfield Storage Reallocation Project, the Horse Stables are open and will remain open during the entire project timespan.

The Stables will not be directly impacted by environmental mitigation or recreation modification work and will not be changed as part of the overall project. However, the stable entrance road will be relocated to the south to accommodate the new alignment and elevation of the Perimeter Road. The equestrian trail will be elevated to accommodate higher water levels and to provide a like-kind experience. Natural surface materials available along the new trail alignment will be used to the fullest extent possible.

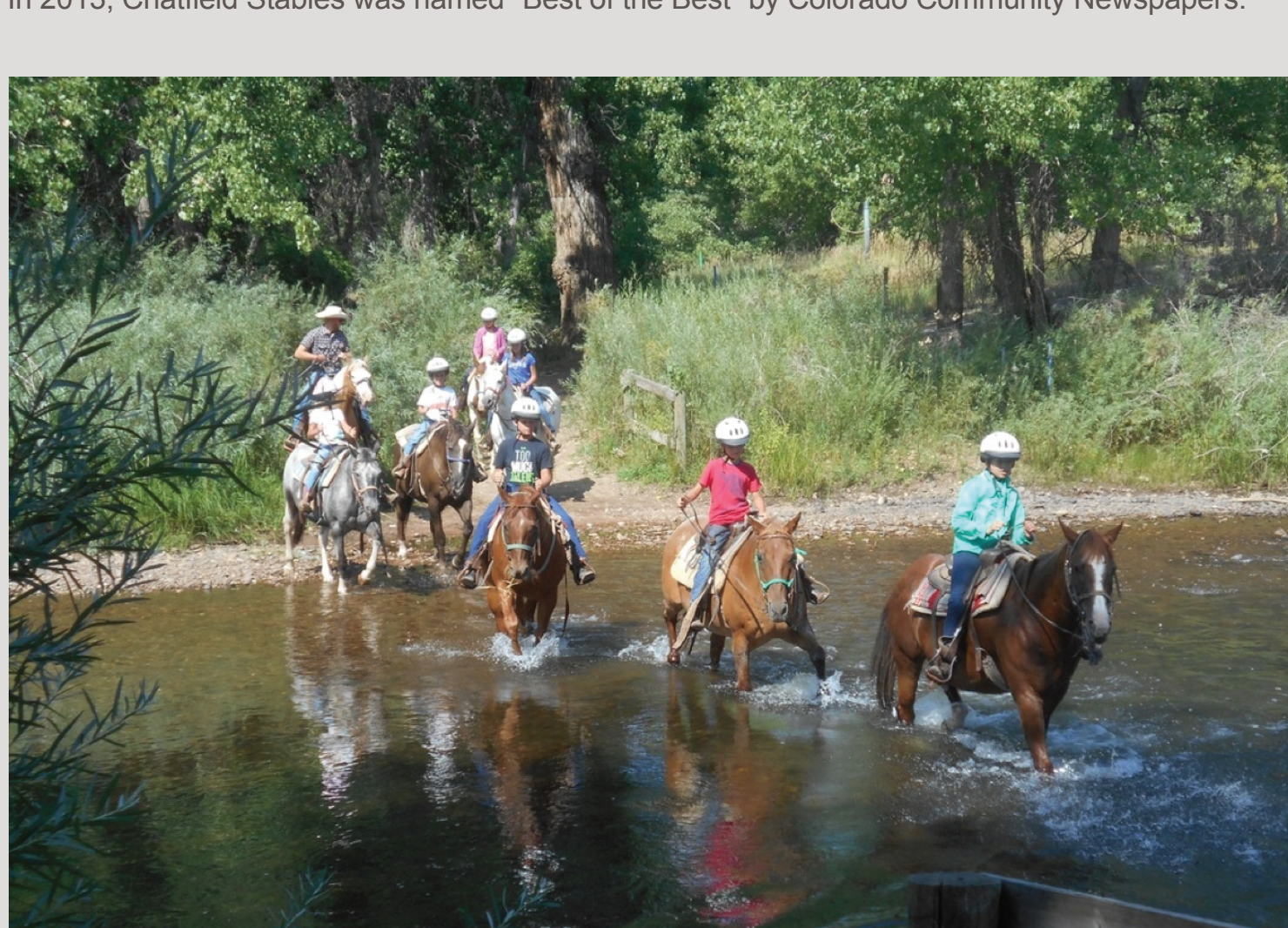
Directions during construction:

Enter Chatfield State Park through the Wadsworth Blvd. entrance located 1 mile south of C-470. It is currently the ONLY entrance available to access the Stables. Go directly to the west entrance station to purchase a day pass or to display an annual parks pass, then make a U-turn to head back towards Wadsworth. Prior to exiting the park, make another U-turn and take an immediate right onto the dirt road (marked with an orange sign) located near the yellow gates.



We encourage visitors to enjoy their own special events at the Chatfield Stables. Consider scheduling a hayride, or reserving the on-site pavilion for a birthday party, which can include pony rides or a trail ride. Call 303-933-3636 to plan your event, or send an email to chatfieldstables@yahoo.com.

In 2013, Chatfield Stables was named "Best of the Best" by Colorado Community Newspapers.



Campers on the Platte River (All photos by Chatfield Stables)

For questions, please call us toll free at: **1-855-387-4660**

or contact us at: info@chatfieldreallocation.org

For detailed information on the Chatfield Storage Reallocation project,

or to view the project video, please go to our website

www.chatfieldreallocation.org

