

A Message from the General Manager

The sponsors of the Chatfield Storage Reallocation Project (CSRP) are pleased to announce that exciting and significant strides have been made since the time of the previous newsletter. Key design components have been developed, reviewed, and approved by a wide array of experts, including the leadership team at the U.S. Army Corps of Engineers. Construction has begun on the important Plum Creek environmental mitigation work. The off-site environmental enhancements in the Sugar Creek watershed, located about 17 miles southwest of the reservoir, are also underway.

Within a short timeframe (scheduled for mid-December), substantial construction efforts are anticipated to begin around the reservoir itself to make way for increased water supply storage. The CSRP team continues to be committed to working with stakeholders and informing the public regarding construction updates and schedules. We want to emphasize that Chatfield State Park will remain open during the entire three-year construction period, with only temporary closures of specific road sections and park areas as the work progresses.

It should come as no surprise that the Chatfield Reservoir Mitigation Company (CRMC) Board of Directors are highly capable and committed individuals representing the project participants for every facet of CRMC operations. The Board Members are:

- **Randy Ray**, CRMC President (Executive Director of the Central Colorado Water Conservancy District)
- **Scott Roush**, Vice President (Manager, Chatfield State Park)
- **Jim Nikkel**, Secretary (District Manager, Castle Pines North Metropolitan District)
- **John Kilrow**, Treasurer (Vice Chair, Board of Directors, Centennial Water & Sanitation District)
- **Lauren Ris**, Board Member (Deputy Director, Colorado Water Conservation Board)

In addition to the five entities represented by the Board members, there are three more participating entities in the project: The Town of Castle Rock, the Center of Colorado Water Conservancy District, and the Castle Pines Metropolitan District. They, too, actively participate in the project through highly knowledgeable staff involvement.

CRMC has seen some major staffing and support changes recently. I'm honored to have been selected as the new General Manager of the CRMC. It's a profound homecoming since my career path included heavy involvement with the planning and permitting phases of the project starting more than a decade ago. I also had the privilege of serving as the first CRMC Board President when the company was formed in 2015. I'm quite pleased to now commit my full-time energy as the General Manager moving forward, but it will take the entire team to tackle the many challenges and logistics related to the CSRP.

Tim Feehan, former General Manager of the CRMC, has shifted to a critical position as the Construction Manager for the company. Tim will be right at home leading all of the complex construction efforts in the field. A new employee, Charly Hoehn, has been added to the CRMC roster in the recent past. She's our new Project Coordinator supporting the company on many fronts, but mainly focusing on construction services organization. While we have a lean staff for such a large project, our collection of extremely capable decision makers, consulting engineers, scientists, attorneys, accountants, public relations specialists, and other experts contribute greatly to the overall cause.



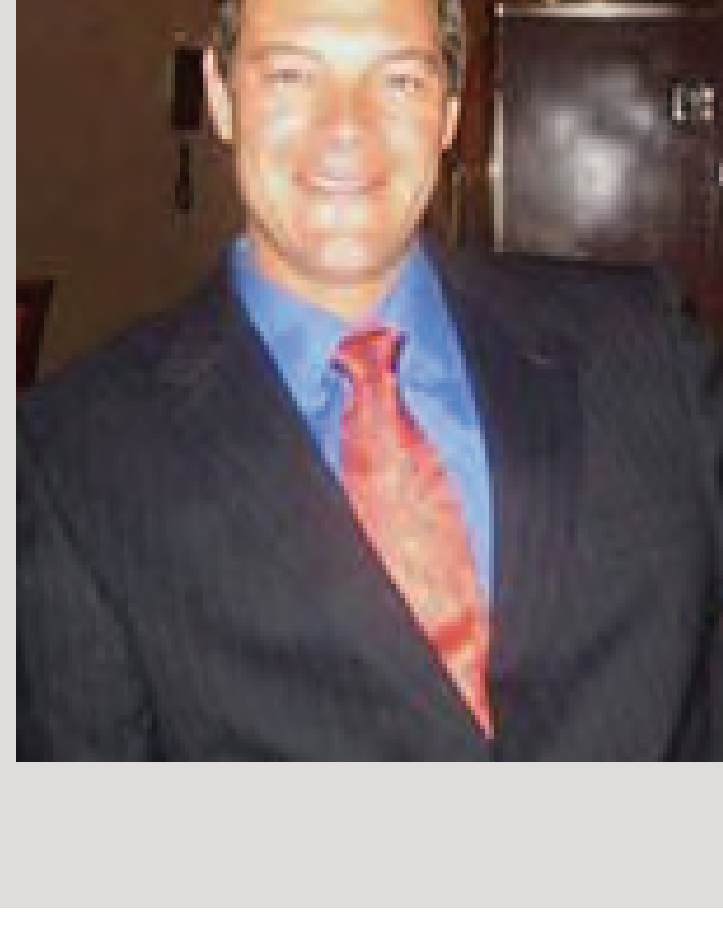
Tim Feehan



Charly Hoehn

For more information about the CSRP, including company information and news releases, please visit our website at www.chatfieldreallocation.org, which is our main source of relevant information. We're available through social media as well. A distinct web page has been created to provide up-to-date information about construction activities around the reservoir and beyond. Questions and feedback from the public can be submitted through a comment form on our website, or through a toll-free messaging service, also listed on the website.

Feel free to contact me with project-related questions. My email is tombrowning.crmc@gmail.com and my mobile number is 720-289-1264. In the meantime, I'd like to extend my sincere gratitude to all those who are involved in this monumental water project!



Tom Browning
General Manager
Chatfield Reservoir Mitigation Company
tombrowning.crmc@gmail.com
720-289-1264 (C)

SUGAR CREEK: OFF-SITE ENVIRONMENTAL ENHANCEMENTS

The CRMC started construction for the off-site environmental enhancements in and along Sugar Creek south of Chatfield Reservoir in Douglas County. Winter weather is arriving, influencing the amount of work our contractor and environmental consultants will be able to accomplish this year. However, the team is ready to forge ahead with these crucial efforts.

The U.S. Army Corps of Engineers has been reviewing and approving each of the design packages for the Chatfield Storage Reallocation Project. The environmental enhancement of the Sugar Creek site involves additional partners since the mitigation will take place on U.S. Forest Service land and a Douglas County roadway rather than on the Corps' own property surrounding the reservoir.

The goal for this area is to improve riparian habitat for Preble's meadow jumping mouse and other small mammals. The Preble's mouse has a long hibernation season, which is already starting. Hand planting and other habitat improvements can be carried out without disturbing the critical habitat unnecessarily.



The area is defined by the creek and its confluence with the South Platte River. Enhancements (and later road improvements) will parallel 4.5 miles of Douglas County Road 67. Habitat enhancement, including extensive plantings, will be constructed in the Sugar Creek riparian area to provide Preble's meadow jumping mouse habitat. Work will include planting, seeding and removal of weeds and woody debris plus cut-slope stabilization, culvert replacement, creation of small mammal passageways, sediment traps and ditch erosion control.

Control of noxious weeds and non-native plant species as well as installation of new, more habitat friendly plants will be the bulk of the work this fall and early winter. This is the best time for planting in the annual cycle.

Preparations for the work in the Sugar Creek area have been extensive — including geotechnical and soil investigations, collection of seeds from native plant species and contract growing of replacement plants.



There will be some environmental impacts to storing more water in Chatfield Reservoir. Most of the mitigation will be carried out on-site (within the boundaries of Chatfield State Park, on U.S. Army Corps of Engineers land). Since the participating water agencies vowed to address all impacts, they collaborated with Douglas County and the U.S. Forest Service to carry out compensatory mitigation along 4.5 stream miles of Sugar Creek in the Pike National Forest. This area is within the Upper South Platte Critical Habitat Unit (CHU) for Preble's mouse.

For a quick overview, watch the [Chatfield Storage Reallocation Project Video](#)

Call us toll free at: **1-855-387-4660**

or contact us at: info@chatfieldreallocation.org

